



UNLIMITED SOLUTIONS FOR A BETTER LIVING.

> Catalogue 2018



 VOLPATO



## > Un'azienda Italiana An Italian company

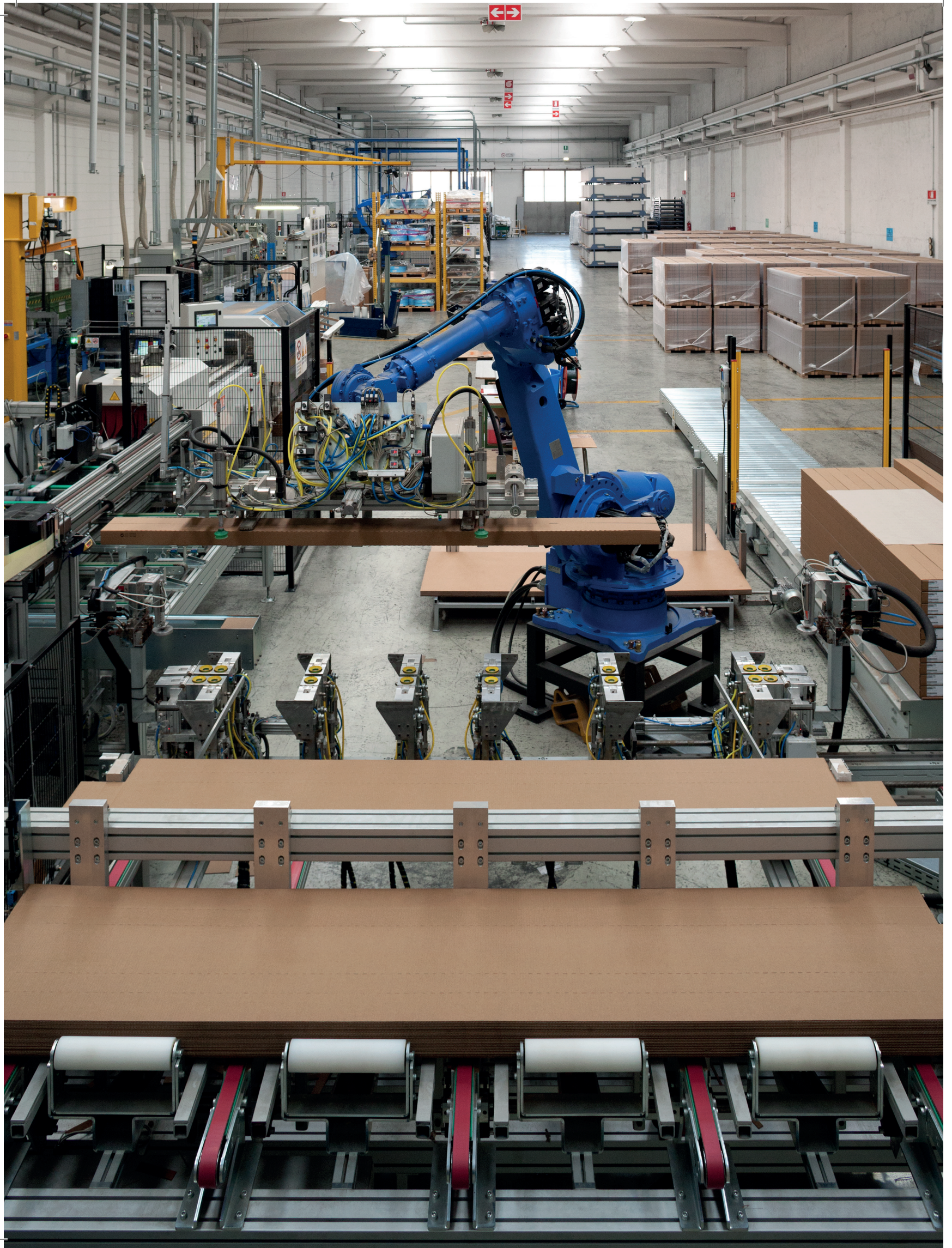
Volpato Industrie è da 40 anni un'azienda leader nella progettazione e produzione di componenti per cucine. Nata nel 1974, ad oggi Volpato Industrie fornisce circa 1.500 clienti in 60 paesi, con la stessa flessibilità e continua ricerca tecnologica che da sempre la contraddistinguono.

La nostra gamma di prodotti comprende: piedini regolabili, zoccoli, basi colonna, accessori per cassetto, basi lavello, alzatine, profili maniglia, profili gola, catenarie, tavoli e supporti penisola. La nostra forza è la capacità di essere sempre in grado di accompagnare il cliente attraverso la scelta del prodotto più adatto alle sue esigenze, e sviluppare prodotti su misura per soddisfare le sue aspettative.

Volpato Industrie is since 40 years a leading company in the development and production of kitchen components. Founded in 1974, today Volpato Industrie is supplying over 1500 customers in 60 countries all over the world, always with the same flexibility and continuous technological improvement which has always been our trademark.

Our products range includes: adjustable legs, plinths, fridge bases, sink bases, backsplashes, handle profiles, gola profiles, joint profiles, tables and peninsular leg supports.

Our strength is that we are continuously supporting our customers from the choice of the most suitable ranges to the development of custom-made products for specific needs.





## > Qualità innovativa Innovative quality



Grazie all'impegno giornaliero e alla profonda convinzione di poter dare il proprio contributo alla salvaguardia dell'ambiente, Volpato Industrie sta orgogliosamente seguendo un piano di sviluppo sostenibile attraverso l'uso di energia prodotta da fonti rinnovabili e l'utilizzo di sistemi ad alta efficienza energetica, impegnandosi inoltre in una gestione delle materie prime e dei rifiuti mirata all'abbattimento dell'impatto ambientale.

Inoltre a dimostrazione dell'impegno assunto verso la piena soddisfazione delle esigenze del cliente e nell'ottica del miglioramento continuo, dal 25 settembre 2009 Volpato Industrie S.p.A. ha ottenuto la certificazione del proprio Sistema di Gestione per la Qualità conformemente alla norma UNI EN ISO 9001. L'azienda ha seguito nel tempo le evoluzioni della norma e adeguato la propria organizzazione, rispondendo al meglio ai requisiti normativi e alle mutevoli condizioni ed aspettative del mercato e della clientela.

Thanks to our daily efforts and to the strong belief of being able to improve the environment around us, Volpato Industrie is proudly implementing a sustainable development plan by using energy from renewable sources and high efficiency production lines, always committing to a raw material use and waste management system aiming to efficiently reduce the environmental impact.

In addition to the demonstration of the commitment to the full satisfaction of the customer requirements and to continuous improvement, from 25 September 2009 Volpato Industrie SpA has obtained the certification of its Quality Management System according to UNI EN ISO 9001. The company has followed the evolution of the norm over time and has adapted its organization, by improving the response to regulatory requirements and to changing conditions and expectations of the market and the customer.



## Piedi regolabili Adjustable legs

p.10-59

Piedi regolabili con basetta integrata Integral adjustable legs Serie > 01-02-03-09-53	p.14
Piedi regolabili con basetta Adjustable legs with base Serie > 04-31	p.23
Regolazione EasyKey Regulation EasyKey Serie > 04	p.25
Basette Bases Serie > 05	p.28
Piedi regolabili con espansione integrata Adjustable legs with built-in expansion Serie > 30	p.33
Ganci Clips Serie > 06	p.36
Viteria Screws Serie > 07	p.39
Serie speciali Special series Serie > T0-21-23-25	p.44
Piedi in alluminio Aluminium legs Serie > 83-84	p.56



## Zoccoli Plinths

p.60-95

Zoccoli in plastica Plastic plinths Serie > 10-20-80-50	p.62
Jolly Corner Jolly Multifit Serie > 21/19H 21/19L	p.72
Gancio Easyfit Gancio Easyfit	p.74
Zoccoli in alluminio Aluminium plinths Serie > 1R AL-1T AL 10 CR-10 MR Serie > 3T AL-30 CR-30 MR	p.76
Sistema cassetto zoccolo Trolley system Serie > 18	p.92



## Basi colonna Fridge bases

p.96-113

Basi colonna frigo Fridge bases Serie > 81 - 83 - 87	p.100
Base colonna wind Fridge base wind Serie > 70 - 73 - 74 - 77 - 6X	p.106
Basi colonna frigo Fridge bases Serie > 70	p.110

# Indice dei contenuti

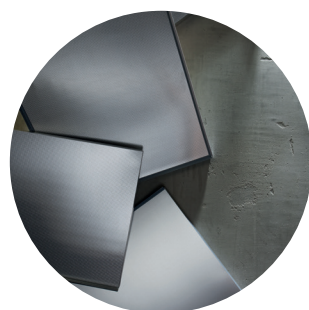
## Index of contents



### Accessori cassetto p.114-131

#### Accessories drawer

Vassoi portaposate Cutlery trays Serie > 72 - 76 - 78 - 80 -	p.116
Tappeto antiscivolo Anti-sliding mat Serie > R1 - R5	p.127
Syphon Flex Syphon Flex Serie > 10	p.128



### Basi lavello p.132-151

#### Sottolavelli

#### Sink bases/Undersinks

Sottolavelli Undersinks Serie > 7 - 8 - 9	p.134
Alzata posteriore Rear back Serie > 2.11	p.139
Protezione fianchi LV. Protection side dishwasher Serie > 40/78	p.141
Pro Cabinet Serie > 3.10	p.142
Basi lavello Sink bases Serie > 1	p.144



### Alzatine p.152-193

#### Backsplashes

Design classico Classic design Serie > 53 - 63 Serie > 51 - 51 MR - 61	p.158
Design triangolare Triangular design Serie > 54 - 56 - 64 - 66 - 68 - D1 - 57 Serie > 55 - 58 - 65 - 65MR - 67 - 69 - 75	p.166
Design rettangolare Rectangular design Serie > 60 - 62 - 70 - 71 - 73 -76	p.184



## Profili maniglia Handles profile

p.194-209

**Profili maniglie** Handles profiles p.196  
Serie > P00 - P01 - P02 - P03 - P04  
P05 - P06 - P07 - P08 - P09

**Profili ante** Door profiles p.206  
Serie > 21



## Profili gola Gola profile

p.210-267

**Sistema gola Clap'n'Fit** Clap'n'Fit gola system p.216  
Serie > G38 - G39

**Gola classica** Classic gola p.226  
Serie > G11 - G12 - G26 - G13 - G14 - G29  
Serie > G15 - G16 - G21 - 31/70

**Gola scatolata** Boxed gola p.248  
Serie > G22 - G23  
Serie > G24 - G25

**Gola piatta** Flat gola p.254  
Serie > G18 - G18PI - G19-G30  
Serie > G19 - G20 - G27 - G28



## Catene in alluminio Joint profiles

p.268-287

**Catene con spine stampate** p.272  
Joint profiles with plastic caps  
Serie > 30-31-32-33-35-36

**Catene con spine in legno** p.280  
Joint profiles with wooden dowels  
Serie > 37-38-3A

**Profilo rinforzo ripiani** p.286  
Strengthening profile for shelf  
Serie > C16 - C18 - C18XL



# Indice dei contenuti

## Index of contents



### Tavoli Tables

p.288-303

Tavoli B1 Tables B1 p.294  
Serie > B1 - B1AL - B1CR  
Tavoli B2 Tavoli B2 p.300  
Serie > B2 - B2AL - B2CR



### Supporti penisola Kitchen peninsula support

p.304-313

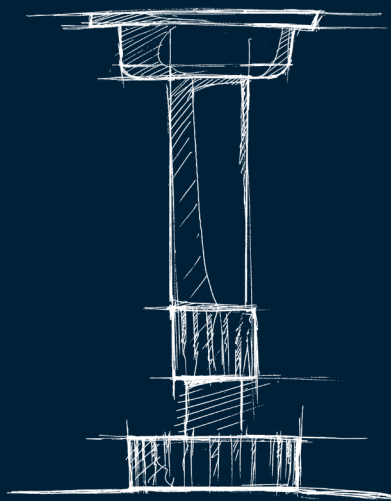
Supporti penisola Peninsula support p.306  
Serie > BS1 - BS3 - BS4 - BS5  
Staffa supporto top Support bracket for top p.312  
Serie > B6M



### Sistema modulare Modular shelving system

p.314-337



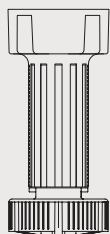


---

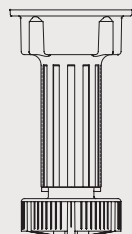
# Piedi regolabili Adjustable legs

## Piedi regolabili con basetta integrata Integral adjustable legs >

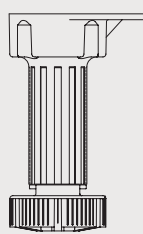
Pag.14



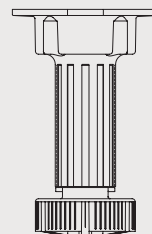
Serie 01



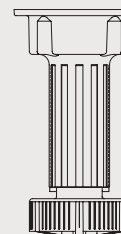
Serie 02



Serie 03

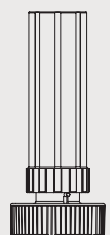


Serie 09



Serie S3

## Piedi regolabili con basetta Adjustable legs with base > Pag.23



Serie 04



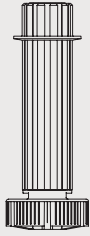
Serie 31

## Piedi regolabili con espansione integrata Adjustable legs with built-in expansion > Pag.33

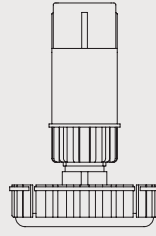


Serie 30

Serie speciali Special series > Pag.44



Serie T0



Serie 21



Serie 23



Serie 25

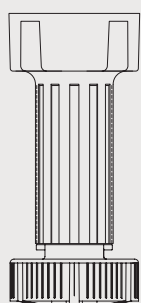
Piedi in alluminio Aluminium legs > Pag.56



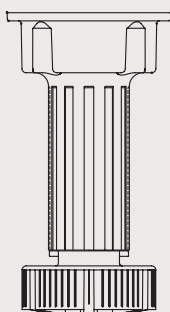
Serie 04

## Piedi regolabili con bassetta integrata

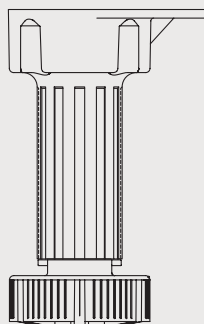
### Integral adjustable legs



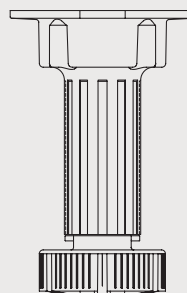
Serie 01  
pag.16



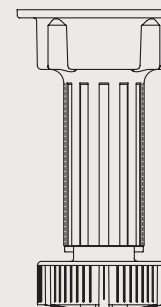
Serie 02  
pag.17



Serie 03  
pag.19



Serie 09  
pag.21



Serie S3  
pag.22

La Volpato Industrie offre una gamma completa di piedi regolabili studiati specificatamente per le basi dei mobili componibili, costituiti da:

- Piedi con bassetta integrata
- Sistema tubi e basette
- Sistema aggancio zoccolo-piedi
- Sistema di regolazione Speed-system
- Sistema d'espansione Easy plug-in

I vari sistemi prevedono i più comuni metodi di fissaggio al cabinet. Sono realizzati in resina termoplastica ad alta resistenza agli urti e presentano le seguenti caratteristiche:

- Ottima resistenza meccanica
- Ottima resistenza all'umidità e all'invecchiamento
- Portata a compressione 400Kg./cad.

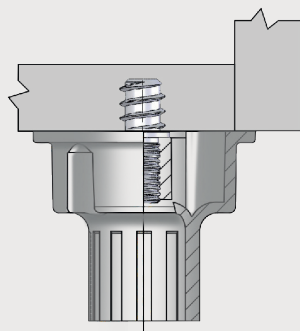
Adjustable legs: Volpato Industrie presents a wide range of adjustable legs specifically developed for modular kitchen cabinets. The series includes:

- legs with integrated base;
- leg with separated base systems ;
- plinth-leg connection systems;

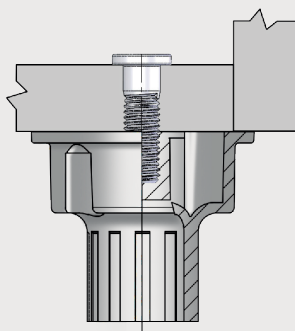
All systems are developed for the most common way of cabinet fixing. All systems, produced using thermoplastic resins, have the following features:

- superior mechanical resistance;
- superior resistance to humidity and aging;
- compression resistance higher than 400kg/leg

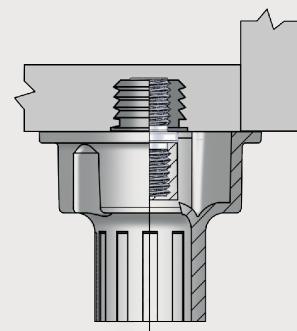
### Tipologia di fissaggio Fixing type



**1.** Perno autofilettante  
Self-tapping pin



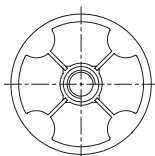
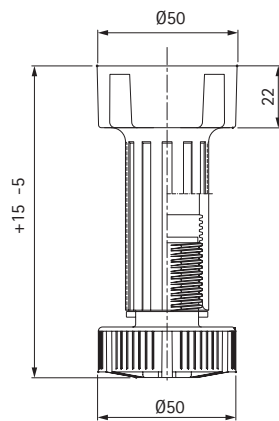
**2.** Vite passante  
Through screw



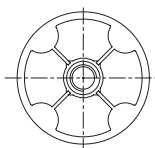
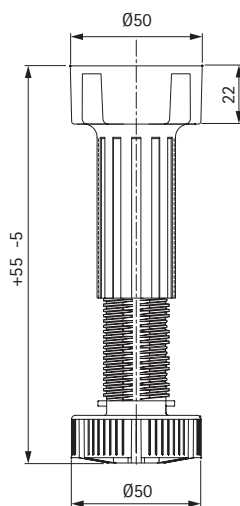
**3.** Perno filettato  
con bussola ad espansione  
Threaded pin with expansion dowel



## Serie 01 > Piedi regolabili con basetta integrata Integral adjustable legs



Doppio principio  
Speed system



Doppio principio  
Speed system



Code	mm	pcs	kg	pcs
10/01.A100	100	300	16	15.000
10/01.A110	110	300	17	15.000
10/01.A120	120	250	15	15.000
10/01.A140	140	200	13	15.000
10/01.A150	150	200	14	15.000

Viti di fissaggio utilizzate  
Screws to be used

10/07.131 – pag.39

10/07.137 – pag.39

10/07.138 – pag.39

10/07.139 – pag.40

10/07.211 – pag.40

10/07.212 – pag.40

10/07.222 – pag.41



Code	mm	pcs	kg	pcs
10/01.R120	120-170	250	16	15.000
10/01.R140	140-190	200	14	15.000
10/01.R150	150-200	200	15	15.000

Viti di fissaggio utilizzate  
Screws to be used

10/07.131 – pag.39

10/07.137 – pag.39

10/07.138 – pag.39

10/07.139 – pag.40

10/07.211 – pag.40

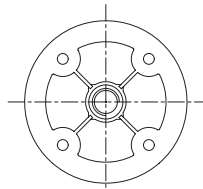
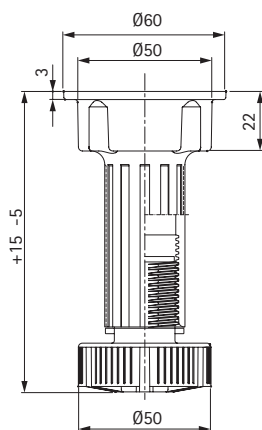
10/07.212 – pag.40

10/07.222 – pag.41

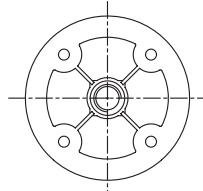
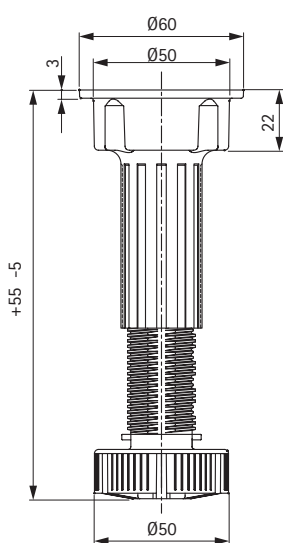


## Serie 02 >

### Piedi regolabili con basetta integrata Integral adjustable legs



Doppio principio  
Speed system



Doppio principio  
Speed system



Code	mm	pcs	kg	pcs
10/02.A100	100	300	17	3.000
10/02.A110	110	300	18	3.000
10/02.A120	120	250	16	3.000
10/02.A140	140	200	14	3.000
10/02.A150	150	200	15	3.000

#### Viti di fissaggio utilizzate Screws to be used

- 10/07.131 – pag.39
- 10/07.137 – pag.39
- 10/07.138 – pag.39
- 10/07.139 – pag.40
- 10/07.211 – pag.40
- 10/07.212 – pag.40
- 10/07.222 – pag.41



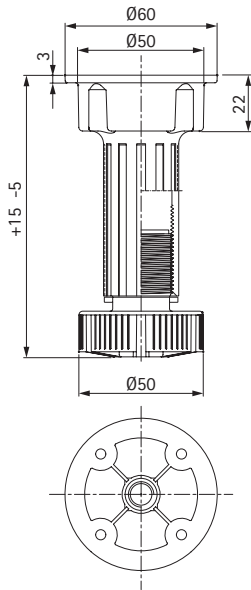
Code	mm	pcs	kg	pcs
10/02.R120	120-170	250	17	3.000
10/02.R140	140-190	200	15	3.000
10/02.R150	150-200	200	16	3.000

#### Viti di fissaggio utilizzate Screws to be used

- 10/07.131 – pag.39
- 10/07.137 – pag.39
- 10/07.138 – pag.39
- 10/07.139 – pag.40
- 10/07.211 – pag.40
- 10/07.212 – pag.40
- 10/07.222 – pag.41

## Serie 02 >

Piedi regolabili con basetta integrata Integral adjustable legs



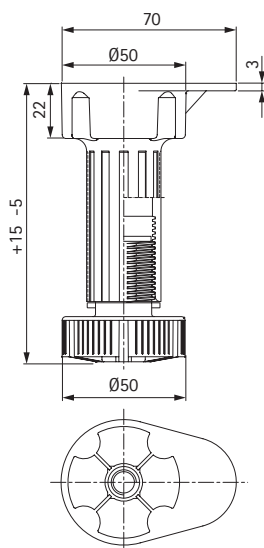
Code	mm	pcs	kg	pcs
10/02.1105	100	300	18	3.000
10/02.1125	110	250	17	3.000
10/02.1155	150	200	16	3.000

Viti di fissaggio utilizzate  
Screws to be used

- 10/07.111 – pag.41
- 10/07.121 – pag.41
- 10/07.122 – pag.42
- 10/07.124 – pag.42
- 10/07.125 – pag.42
- 10/07.128Z – pag.42
- 10/07.129 – pag.43

## Serie 03 >

### Piedi regolabili con bassetta integrata Integral adjustable legs



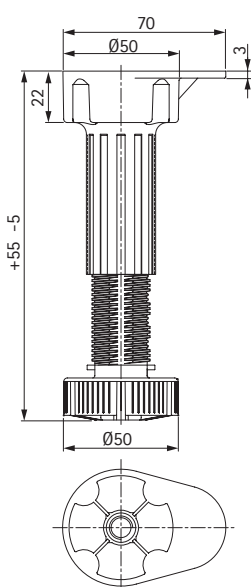
Doppio principio  
Speed system



Code	mm	pcs	kg	pcs
10/03.A400	100	300	17	15.000
10/03.A410	110	300	18	15.000
10/03.A420	120	250	16	15.000
10/03.A440	140	200	14	15.000
10/03.A450	150	200	15	15.000

#### Viti di fissaggio utilizzate Screws to be used

10/07.131 – pag.39  
10/07.137 – pag.39  
10/07.138 – pag.39  
10/07.139 – pag.40  
10/07.211 – pag.40  
10/07.212 – pag.40  
10/07.222 – pag.41



Doppio principio  
Speed system

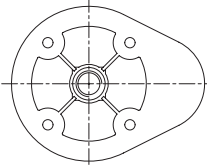
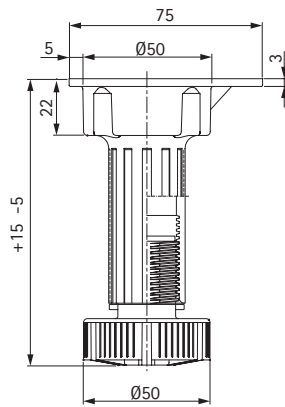


Code	mm	pcs	kg	pcs
10/03.R420	120-170	250	17	15.000
10/03.R440	140-190	200	15	15.000
10/03.R450	150-200	200	16	15.000

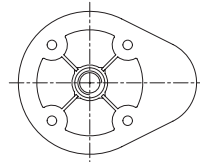
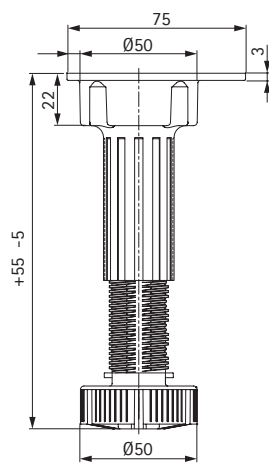
#### Viti di fissaggio utilizzate Screws to be used

10/07.131 – pag.39  
10/07.137 – pag.39  
10/07.138 – pag.39  
10/07.139 – pag.40  
10/07.211 – pag.40  
10/07.212 – pag.40  
10/07.222 – pag.41

## Serie 03 > Piedi regolabili con bassetta integrata Integral adjustable legs



Doppio principio  
Speed system



Doppio principio  
Speed system



Code

mm

pcs

kg

pcs

10/03.A700

100

300

18

15.000

10/03.A710

110

300

19

15.000

10/03.A720

120

250

17

15.000

10/03.A740

140

200

15

15.000

10/03.A750

150

200

16

15.000

Viti di fissaggio utilizzate  
Screws to be used

10/07.131 – pag.39

10/07.137 – pag.39

10/07.138 – pag.39

10/07.139 – pag.40

10/07.211 – pag.40

10/07.212 – pag.40

10/07.222 – pag.41



Code

mm

pcs

kg

pcs

10/03.R720

120-170

250

16

15.000

10/03.R740

140-190

200

16

15.000

10/03.R750

150-200

200

17

15.000

Viti di fissaggio utilizzate  
Screws to be used

10/07.131 – pag.39

10/07.137 – pag.39

10/07.138 – pag.39

10/07.139 – pag.40

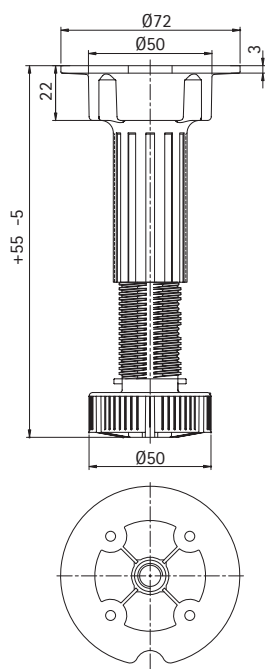
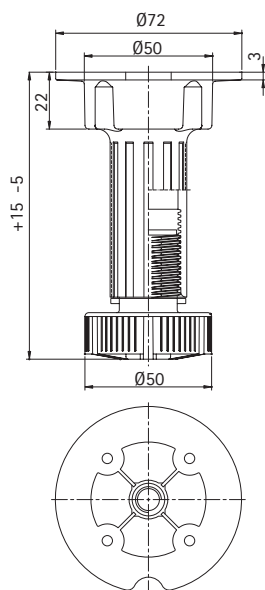
10/07.211 – pag.40

10/07.212 – pag.40

10/07.222 – pag.41

## Serie 09 >

### Piedi regolabili con bassetta integrata Integral adjustable legs



Doppio principio  
Speed system



Code	mm	pcs	kg	pcs
10/09.A080	80	300	16	15.000
10/09.A100	100	300	17	15.000
10/09.A120	120	250	16	15.000
10/09.A140	140	200	14	15.000
10/09.A150	150	200	15	15.000

#### Viti di fissaggio utilizzate Screws to be used

- 10/07.131 – pag.39
- 10/07.137 – pag.39
- 10/07.138 – pag.39
- 10/07.139 – pag.40
- 10/07.211 – pag.40
- 10/07.212 – pag.40
- 10/07.222 – pag.41



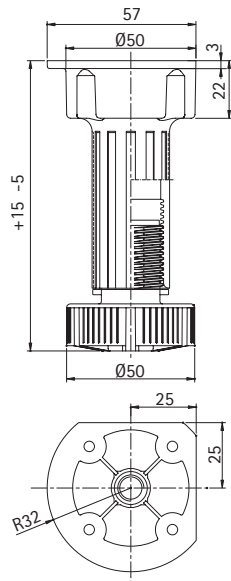
Code	mm	pcs	kg	pcs
10/09.R120	120-170	250	18	15.000
10/09.R140	140-190	200	15	15.000
10/09.R150	150-200	200	16	15.000

#### Viti di fissaggio utilizzate Screws to be used

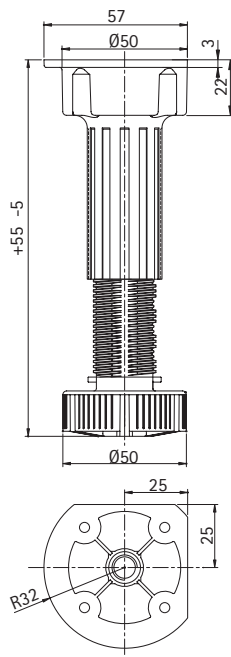
- 10/07.131 – pag.39
- 10/07.137 – pag.39
- 10/07.138 – pag.39
- 10/07.139 – pag.40
- 10/07.211 – pag.40
- 10/07.212 – pag.40
- 10/07.222 – pag.41

## Serie S3 >

Piedi regolabili con basetta integrata Integral adjustable legs



Doppio principio  
Speed system



Doppio principio  
Speed system



Code	mm	pcs	kg	pcs
10/S3.A100	100	300	17	15.000
10/S3.A110	110	300	18	15.000
10/S3.A120	120	250	16	15.000
10/S3.A140	140	200	14	15.000
10/S3.A150	150	200	15	15.000

Viti di fissaggio utilizzate  
Screws to be used

10/07.131 – pag.39

10/07.137 – pag.39

10/07.138 – pag.39

10/07.222 – pag.41



Code	mm	pcs	kg	pcs
10/S3.R120	120-170	250	17	15.000
10/S3.R140	140-190	200	15	15.000
10/S3.R150	150-200	200	16	15.000

Viti di fissaggio utilizzate  
Screws to be used

10/07.131 – pag.39

10/07.137 – pag.39

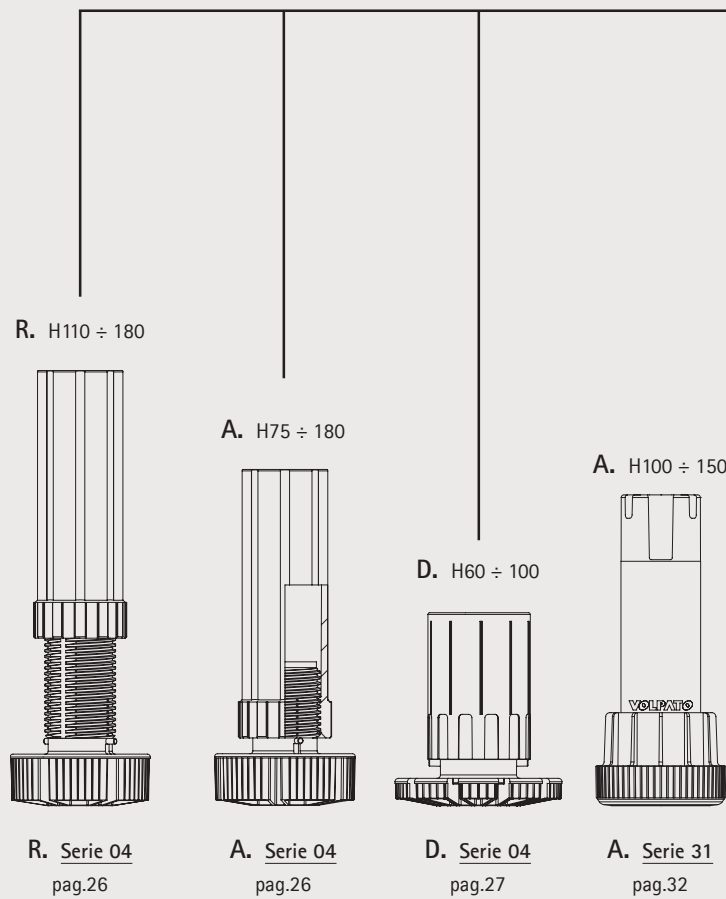
10/07.138 – pag.39

10/07.222 – pag.41

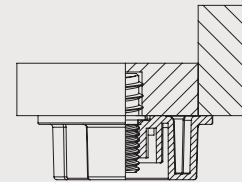
# Piedi regolabili con bassetta >

## Adjustable legs with base

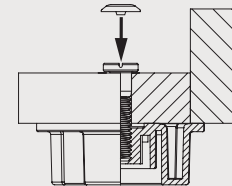
Sistema tubi e basette Serie 04 - Serie 31  
System tubes and bases



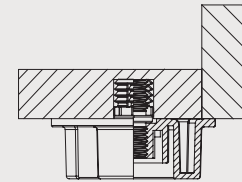
1. Perno autofilettante  
Self-tapping pin



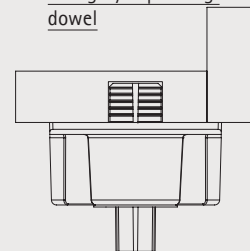
2. Vite passante  
Through screw



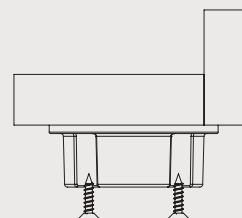
3. Perno filettato con bussola ad espansione  
Threaded pin with bushing expansion



4. Fissaggio ad espansione  
Fixing by expanding dowel



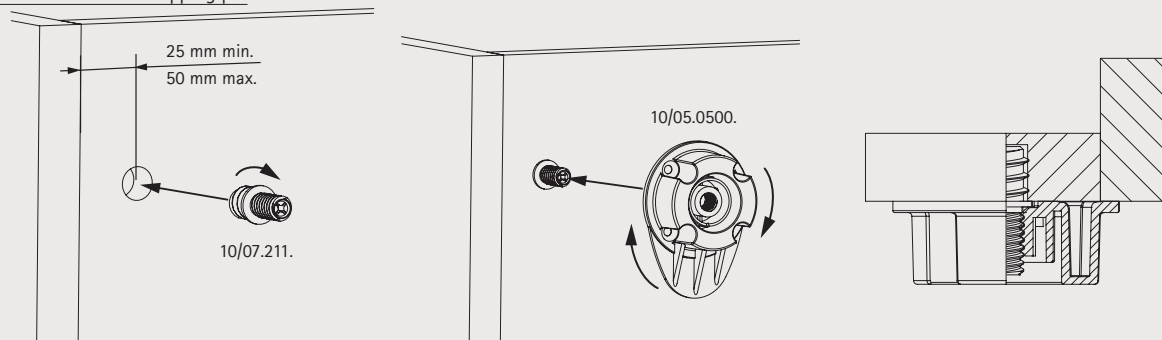
5. Vite autofilettante  
Self-tapping screw



## Sistema tubi e basette Serie 04 - Serie 31 System tubes and bases Serie 04 - Serie 31

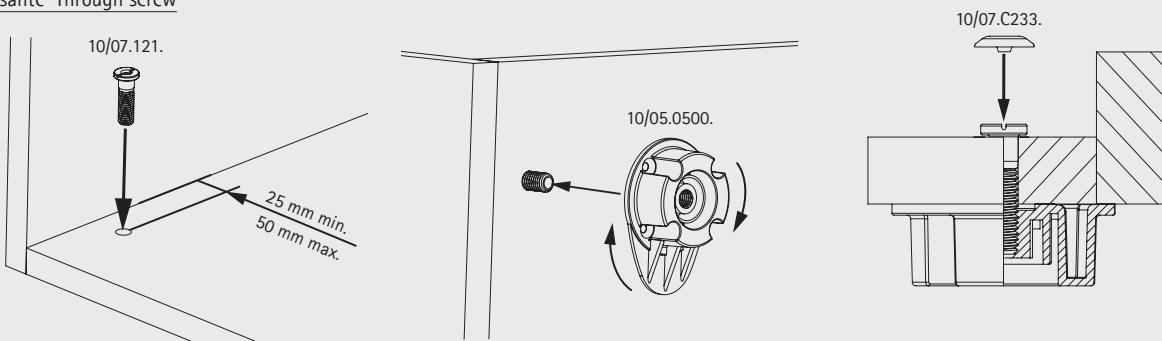
### 1. Perno autofilettante Self-tapping pin

> Step 1



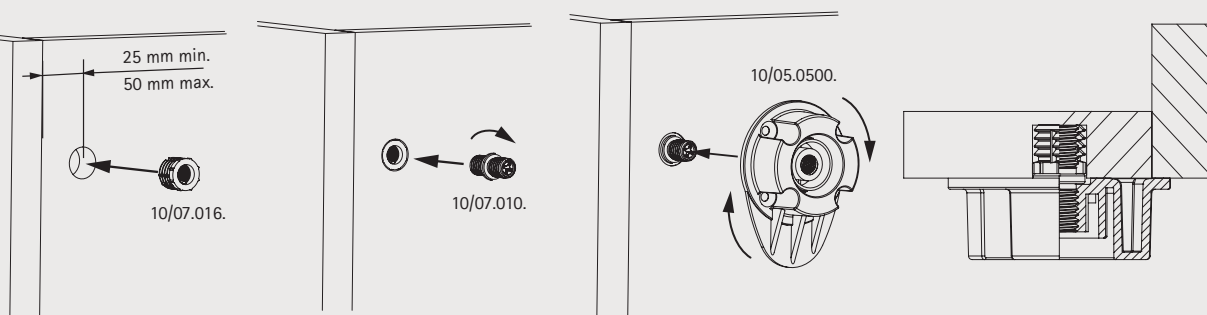
### 2. Vite passante Through screw

> Step 1



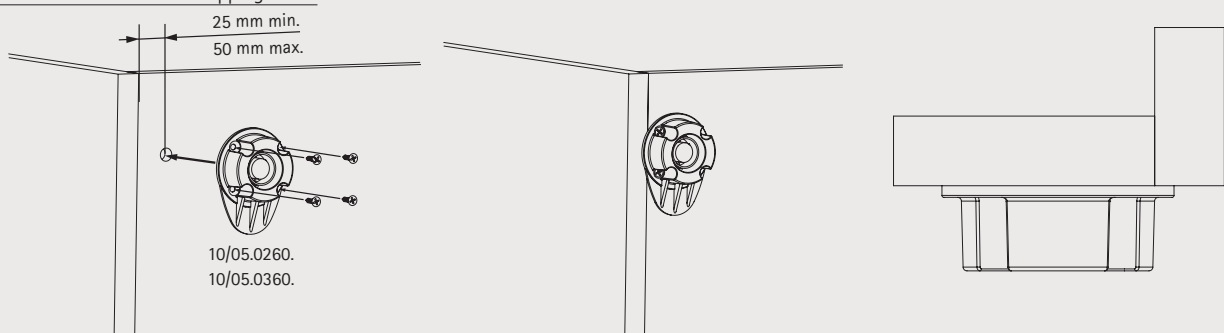
### 3. Perno filettato con bussola ad espansione Threaded pin with bush

> Step 1



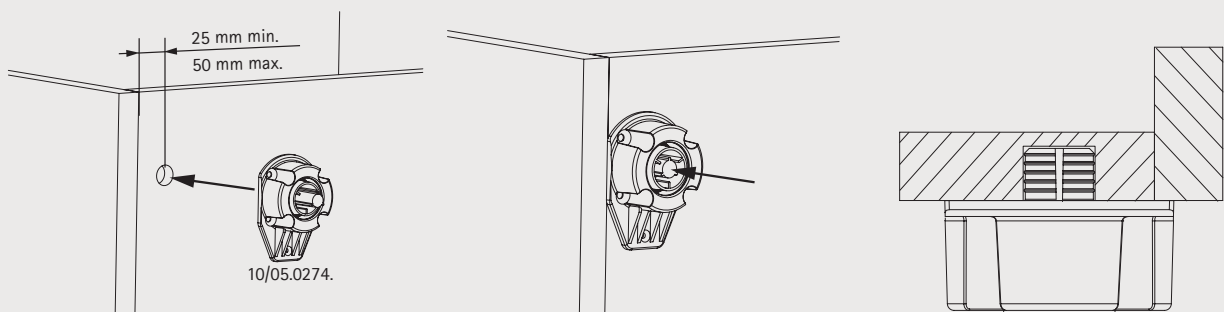
### 4. Vite autofilettante Self-tapping screw

> Step 1



### 5. Fissaggio ad espansione Fixing by expanding dowel

> Step 1



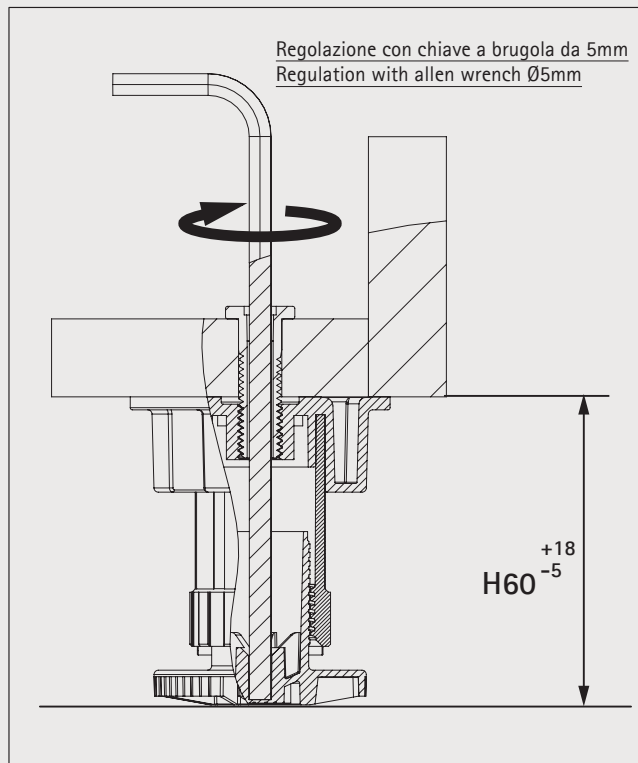
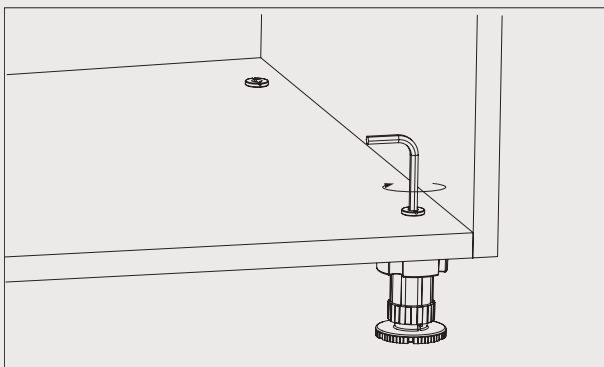
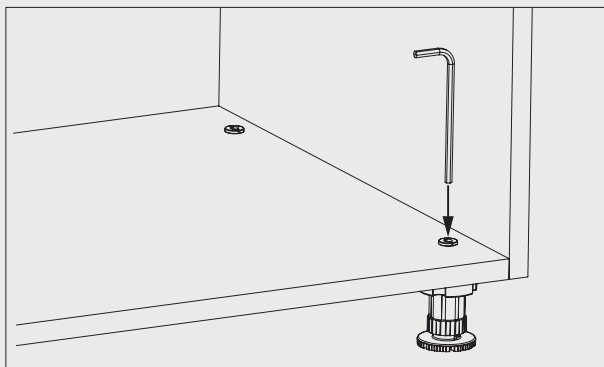


# Piedi regolabili con bassetta >

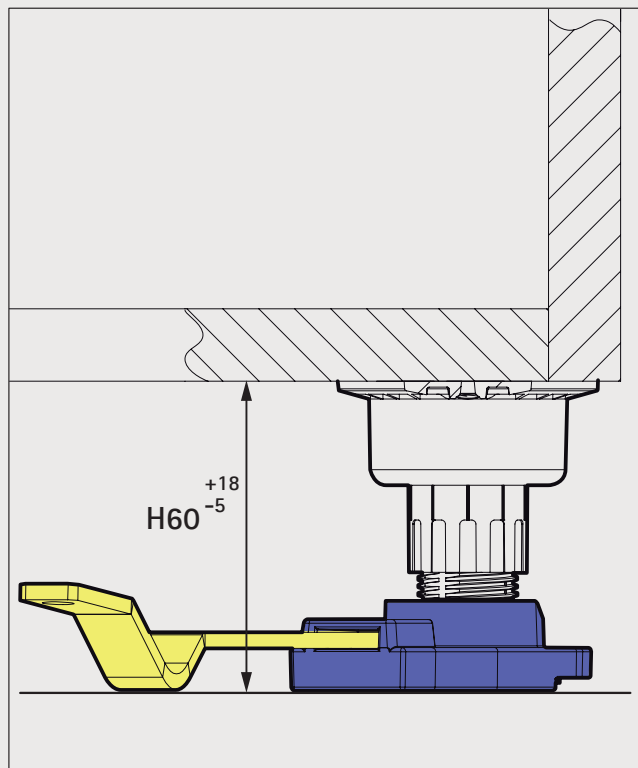
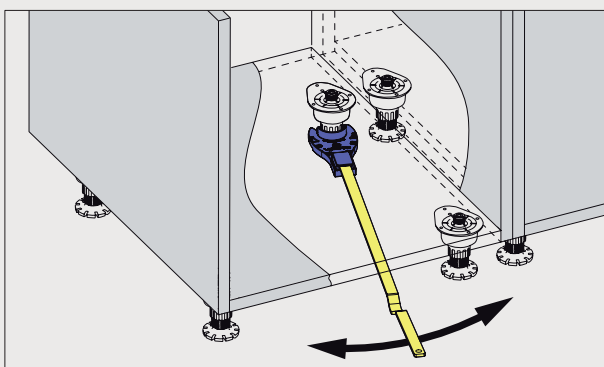
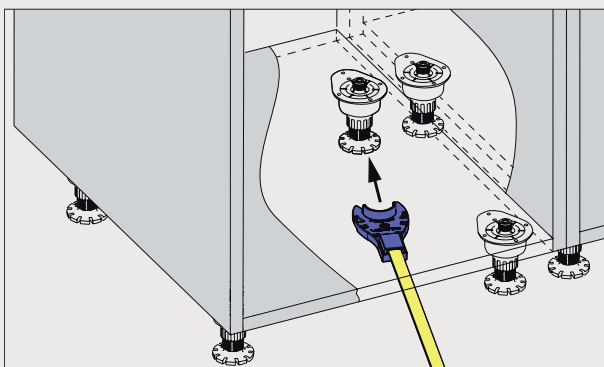
## Adjustable legs with base

Sistema tubi e basette  
Serie 04 H60 mm  
System tubes and bases

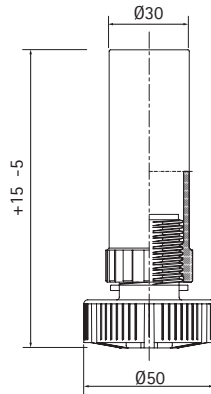
A. Fissaggio con vite forata M10 cod.10/07.121  
Fixing with perforated screw M10 cod. 10/07.121







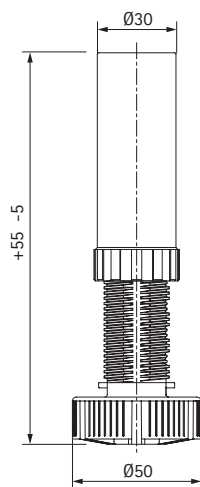
B. Regolazione con chiave EasyKey 15.01.002  
Regulation with EasyKey 15.01.002





## Serie 04 > Piedi regolabili con basetta Adjustable legs with base



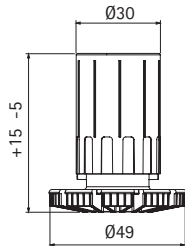
Code				
	mm	pcs	kg	pcs
10/04.A075	75	400	12	4.000
10/04.A080	80	400	13	4.000
10/04.A090	90	400	14	4.000
10/04.A100	100	400	15	4.000
10/04.A110	110	400	16	4.000
10/04.A120	120	400	17	4.000
10/04.A130	130	400	18	4.000
10/04.A140	140	200	10	4.000
10/04.A150	150	200	10	4.000
10/04.A160	160	200	11	4.000
10/04.A170	170	200	11	4.000
10/04.A180	180	200	12	4.000



Code				
	mm	pcs	kg	pcs
10/04.R110	110-160	400	18	4.000
10/04.R120	120-170	400	19	4.000
10/04.R130	130-180	400	20	4.000
10/04.R140	140-190	200	11	4.000
10/04.R150	150-200	200	11	4.000
10/04.R160	160-210	200	12	4.000
10/04.R170	170-220	200	12	4.000
10/04.R180	180-230	200	13	4.000

## Serie 04 >

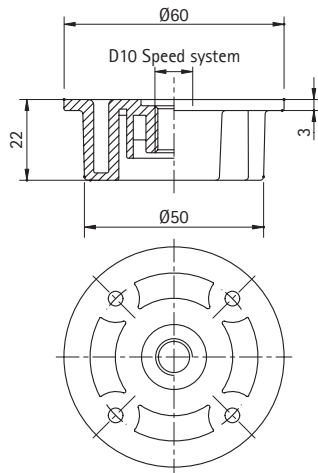
Piedi regolabili con basetta Adjustable legs with base






Code	mm	pcs	kg	pcs
10/04.D060	60	300	7	3.000
10/04.D070	70	300	7,5	3.000
10/04.D080	80	300	8	3.000
10/04.D100	100	300	9	3.000

Regolazione con chiave EasyKey 15.01.002  
Regulation with EasyKey 15.01.002

## Serie 04 > Basette Bases

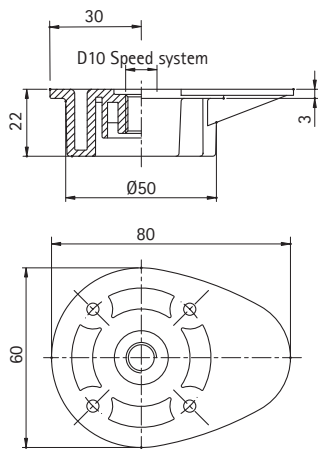


Doppio principio  
Speed system




Code			
	pcs	kg	pcs
10/05.0400	400	10	4.000

Viti di fissaggio utilizzate  
Screws to be used

10/07.131 – pag.39  
10/07.137 – pag.39  
10/07.138 – pag.39  
10/07.139 – pag.40  
10/07.211 – pag.40  
10/07.212 – pag.40  
10/07.222 – pag.41

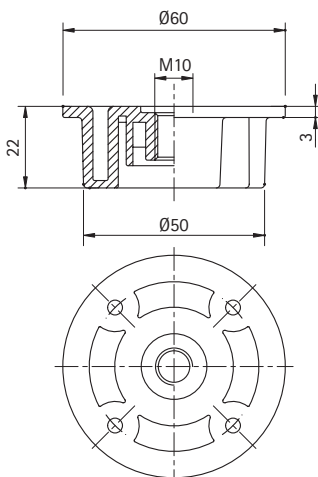





Doppio principio  
Speed system

Code			
	pcs	kg	pcs
10/05.0500	400	11	4.000

Viti di fissaggio utilizzate  
Screws to be used

10/07.131 – pag.39  
10/07.137 – pag.39  
10/07.138 – pag.39  
10/07.139 – pag.40  
10/07.211 – pag.40  
10/07.212 – pag.40  
10/07.222 – pag.41

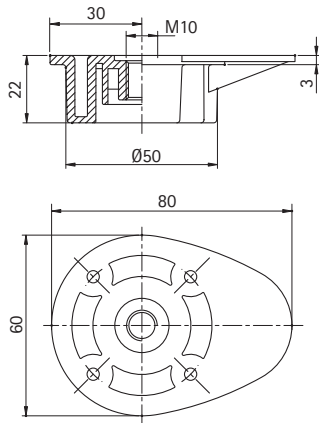





Code			
	pcs	kg	pcs
10/05.0251	400	10	4.000

Viti di fissaggio utilizzate  
Screws to be used

10/07.111 – pag.41  
10/07.121 – pag.41  
10/07.122 – pag.42  
10/07.124 – pag.42  
10/07.125 – pag.42  
10/07.128Z – pag.42  
10/07.129 – pag.43

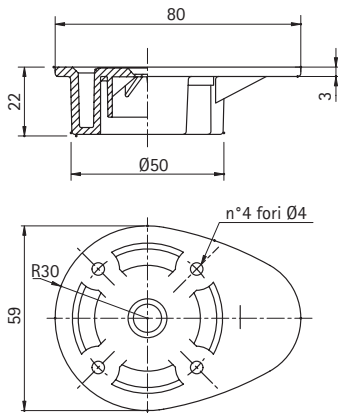
## Serie 04 > Basette Bases






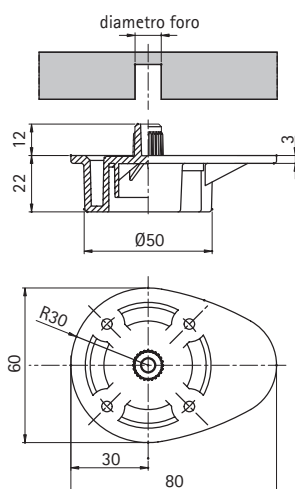
Code	 pcs	 kg	 pcs
10/05.0261	400	11	4.000





Viti di fissaggio utilizzate  
Screws to be used

- 10/07.111 – pag.41
- 10/07.121 – pag.41
- 10/07.122 – pag.42
- 10/07.124 – pag.42
- 10/07.125 – pag.42
- 10/07.128Z – pag.42
- 10/07.129 – pag.43

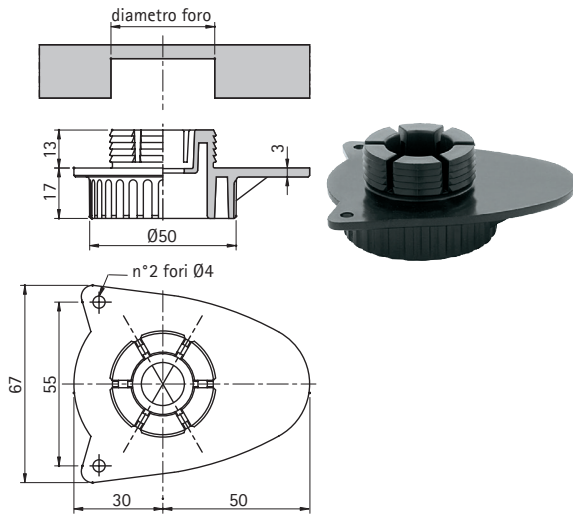






Code	 pcs	 kg	 pcs
10/05.0260	400	12	4.000

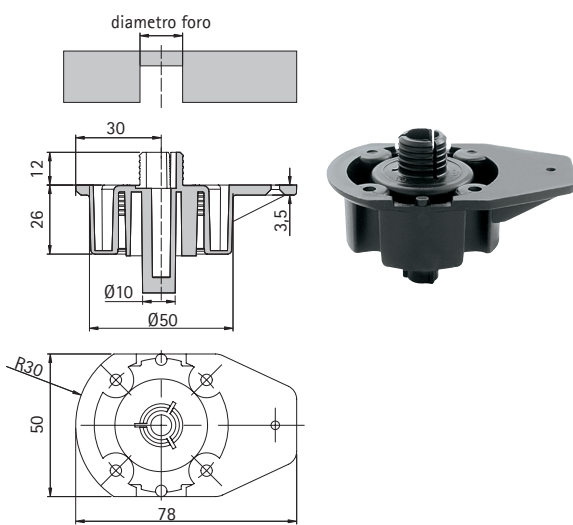






Code	 mm	 pcs	 kg	 pcs
10/05.0262	10	400	12	4.000

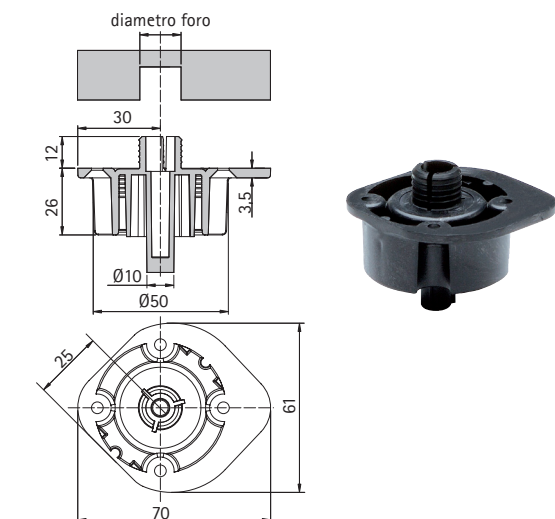
## Serie 04 > Basette Bases







Code	 mm	 pcs	 kg	 pcs
10/05.0268	35	400	11	4.000



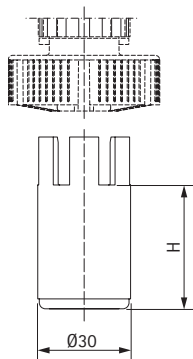
Code	 mm	 pcs	 kg	 pcs
10/05.0272	10	400	12	4.000
10/05.0273	15	400	14	4.000
10/05.0274	16	400	14	4.000
10/05.0275	13	400	14	4.000







Code	 mm	 pcs	 kg	 pcs
10/05.0282	10	400	12	4.000
10/05.0283	15	400	14	4.000
10/05.0284	16	400	14	4.000
10/05.0285	13	400	14	4.000

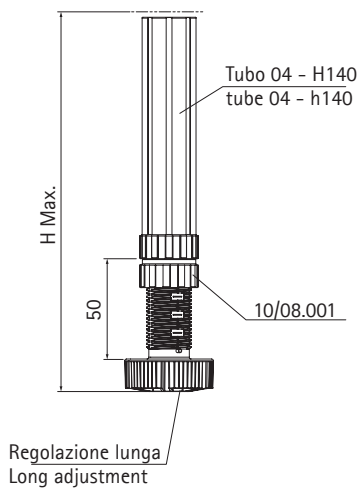
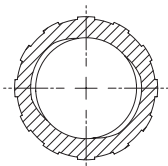
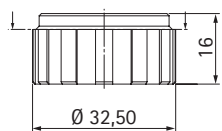
## Serie 04 >

### Basette Bases






Prolunga  
extension

Code	 mm	 pcs	 kg	 pcs
10/05.183	30	1.000	30	2.000
10/05.184	40	1.000	30	2.000
10/05.185	50	1.000	30	2.000



Regolazione lunga  
Long adjustment

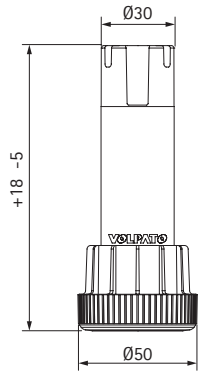
Code	 pcs	 kg	 pcs
10/08.001	1000	6	-

Fornita non montata  
Supplied unmounted

**Ghiera di serraggio.**  
Accessorio utile nel campo di altezze H>120mm  
con regolazione + 50 mm per bloccare e stabilizzare il piedino  
**Tightening ring nut.**  
Accessory useful for heights 120 mm and over  
with a +50 mm adjustment to lock and stabilize the leg.

## Serie 31 >

Piedi regolabili con basetta Adjustable legs with base



Code

mm

pcs

kg

pcs

10/31.A100

100

400

16

4.000

10/31.A120

120

400

17

4.000

10/31.A140

140

200

10

4.000

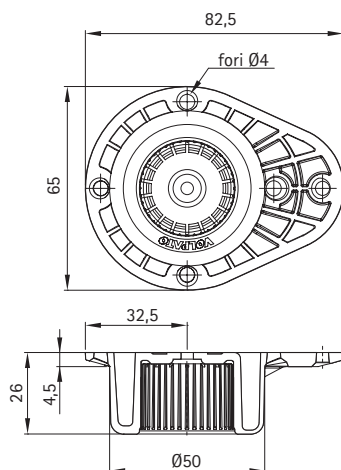
10/31.A150

150

200

10

4.000



Code

pcs

kg

pcs

10/05.0360

400

10

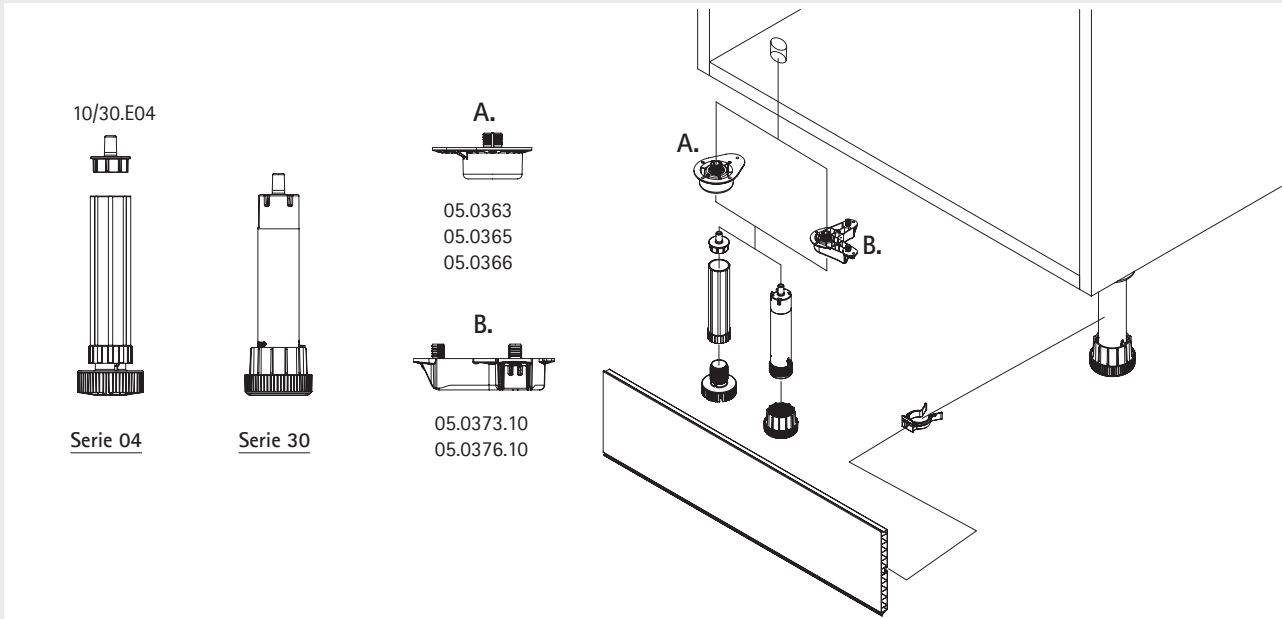
4.000



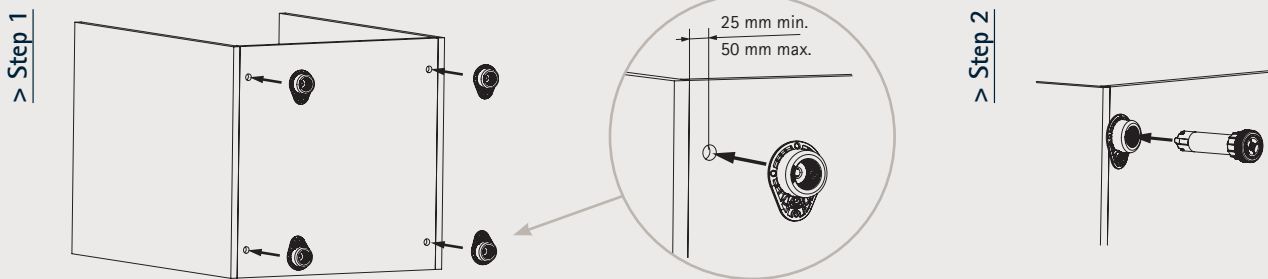
# Piedi regolabili con espansione integrata >

## Adjustable legs with built-in expansion

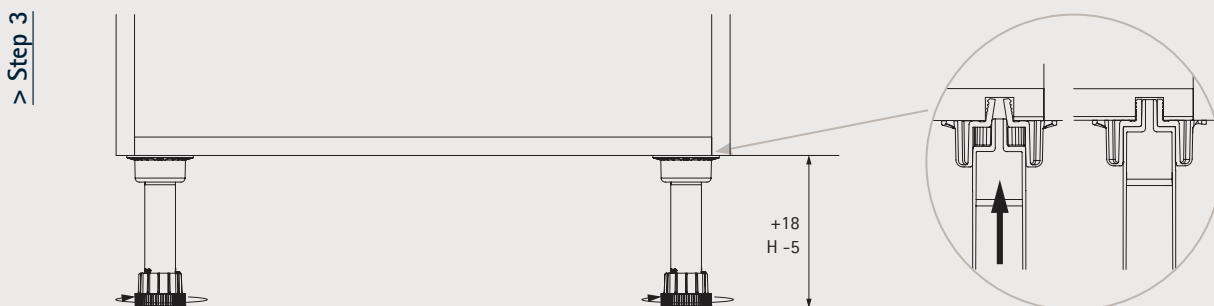
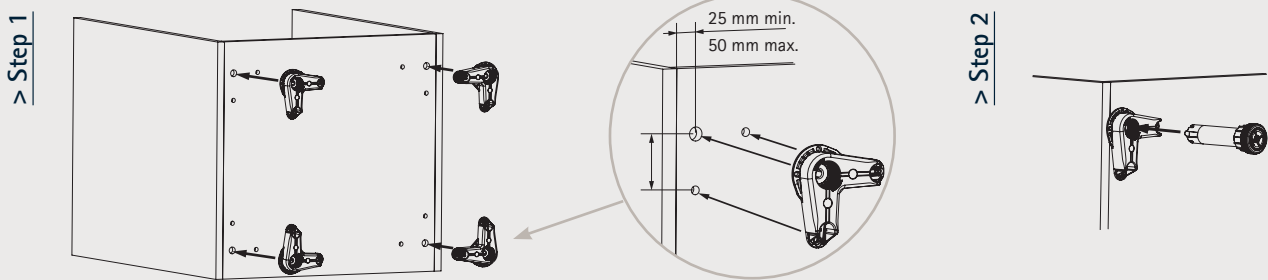
Tubi e basette Serie 30 - Serie 04  
Tubes and bases



### A. Serie 30

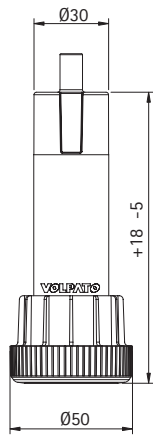


### B. Serie 30

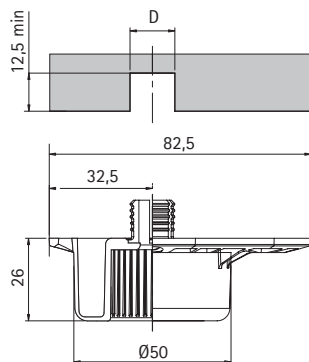


## Serie 30 >

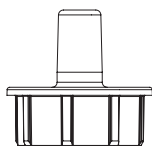
Tubi regolabili con espansione integrata Adjustable legs with built-in expansion



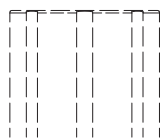
Code	mm	pcs	kg	pcs
10/30.A100	100	400	16	4.000
10/30.A120	120	400	17	4.000
10/30.A140	140	200	10	4.000
10/30.A150	150	200	10	4.000



Code	mm	pcs	kg	pcs
10/05.0363	13	400	10	4.000
10/05.0365	15	400	10	4.000
10/05.0366	16	400	10	4.000



Code	pcs	kg	pcs
10/30.E04	2000	10	4000

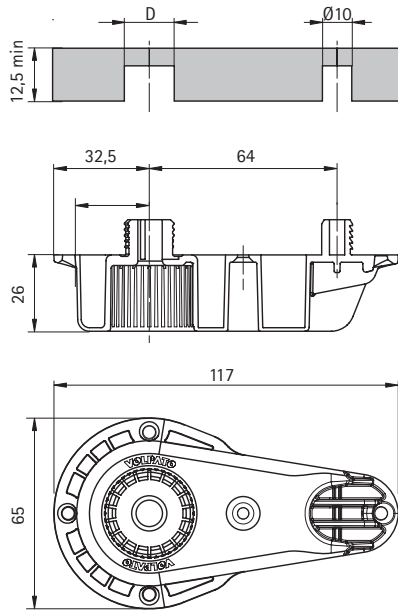






Espansione per tubo serie04 – pag.24  
Expanding solution tube serie04 – pag.24

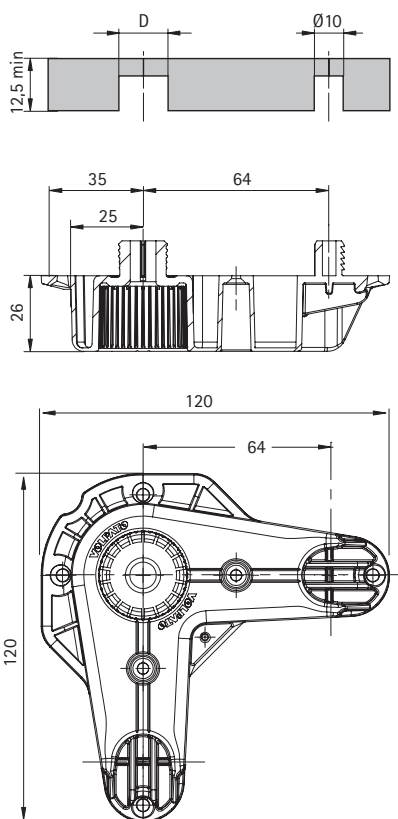
Basette utilizzate  
Bases to be used





10/05.0363 – pag.34  
10/05.0365 – pag.34  
10/05.0366 – pag.34  
10/05.0383.10 – pag.35  
10/05.0386.10 – pag.35  
10/05.0373.10 – pag.35  
10/05.0376.10 – pag.35

## Serie 30 > Tubi regolabili con espansione integrata Adjustable legs with built-in expansion



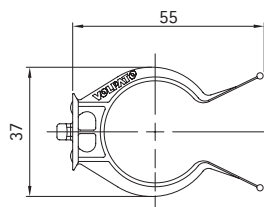
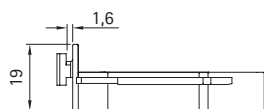
Code	 mm	 pcs	 kg	 pcs
10/05.0383.10	13	400	15	4.000
10/02.0386.10	16	400	15	4.000



Code	 mm	 pcs	 kg	 pcs
10/05.0373.10	13	200	15	4.000
10/05.0376.10	16	200	15	4.000

## Serie 06 >

### Ganci Clips

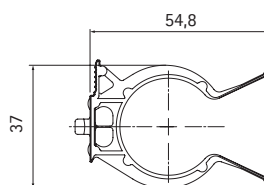
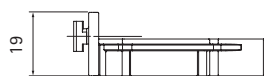


Per zoccoli in plastica e alluminio  
For plastic and aluminium plinths

Code	pcs	kg	pcs
10/06.151	2.000	10	4.000

Tubi utilizzati  
Tubes to be used

serie 01 pag.16 serie 09 pag.21 serie 30 pag.33  
serie 02 pag.17 serie S3 pag.22 serie 31 pag.32  
serie 03 pag.19 serie 04 pag.23 serie T0 pag.44



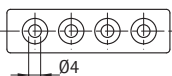
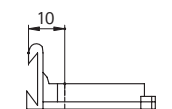
Sistema Gancio Easyfit  
Easyfit clip system

Per zoccoli in plastica e alluminio  
For plastic and aluminium plinths

Code	pcs	kg	pcs
10/06.155	2.000	10	4.000

Tubi utilizzati  
Tubes to be used

serie 01 pag.16 serie 09 pag.21 serie 30 pag.33  
serie 02 pag.17 serie S3 pag.22 serie 31 pag.32  
serie 03 pag.19 serie 04 pag.23 serie T0 pag.44

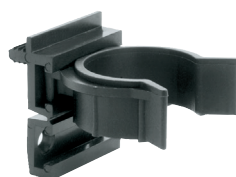
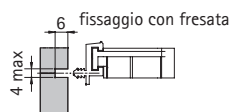


Per zoccoli in nobilitato  
For chipboard plinths

Code	pcs	kg	pcs
10/06.162	1.500	10	6.000

Tubi utilizzati  
Tubes to be used

serie 01 pag.16 serie 09 pag.21 serie 30 pag.33  
serie 02 pag.17 serie S3 pag.22 serie 31 pag.32  
serie 03 pag.19 serie 04 pag.23 serie T0 pag.44



Per zoccoli in nobilitato  
For chipboard plinths

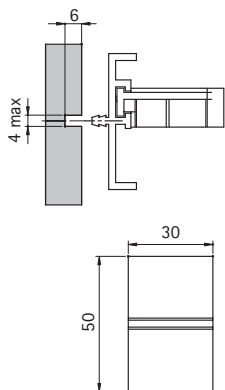
Code	pcs	kg	pcs
10/06.180	2.500	24	5.000

Tubi utilizzati  
Tubes to be used




serie 01 pag.16 serie 09 pag.21 serie 30 pag.33  
serie 02 pag.17 serie S3 pag.22 serie 31 pag.32  
serie 03 pag.19 serie 04 pag.23 serie T0 pag.44

## Serie 06 >

### Ganci Clips

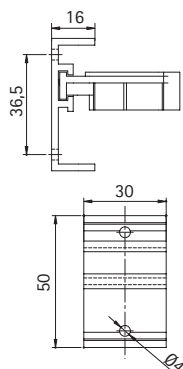


Per zoccoli in nobilitato  
For chipboard plinths




Code	 pcs	 kg	 pcs
10/06.175	2.500	34	5.000

Tubi utilizzati  
Tubes to be used

serie 01 pag.16	serie 09 pag.21	serie 30 pag.33
serie 02 pag.17	serie S3 pag.22	serie 31 pag.32
serie 03 pag.19	serie 04 pag.23	serie T0 pag.44

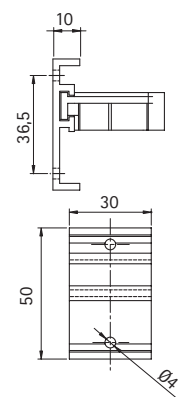


Per zoccoli in nobilitato  
For chipboard plinths




Code	 pcs	 kg	 pcs
10/06.172	2.500	32	5.000

Tubi utilizzati  
Tubes to be used

serie 01 pag.16	serie 09 pag.21	serie 30 pag.33
serie 02 pag.17	serie S3 pag.22	serie 31 pag.32
serie 03 pag.19	serie 04 pag.23	serie T0 pag.44

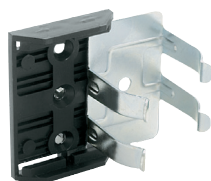
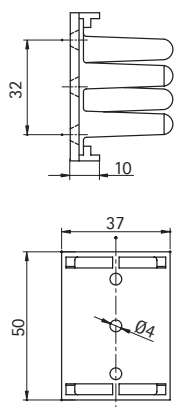


Per zoccoli in nobilitato  
For chipboard plinths




Code	 pcs	 kg	 pcs
10/06.171	2.500	30	5.000

Tubi utilizzati  
Tubes to be used

serie 01 pag.16	serie 09 pag.21	serie 30 pag.33
serie 02 pag.17	serie S3 pag.22	serie 31 pag.32
serie 03 pag.19	serie 04 pag.23	serie T0 pag.44



Per zoccoli in nobilitato  
For chipboard plinths

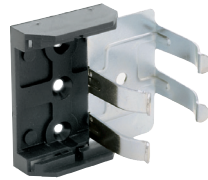
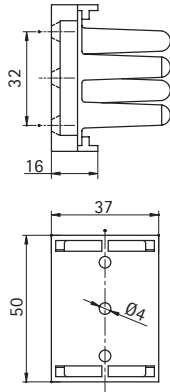
Code	 pcs	 kg	 pcs
10/06.141	2.000	47	6.000

Tubi utilizzati  
Tubes to be used




serie 01 pag.16	serie 09 pag.21	serie 30 pag.33
serie 02 pag.17	serie S3 pag.22	serie 31 pag.32
serie 03 pag.19	serie 04 pag.23	serie T0 pag.44

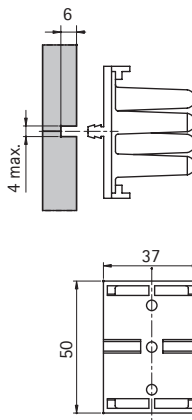
## Serie 06 >

### Ganci Clips






Per zoccoli in nobilitato  
For chipboard plinths

Code	 pcs	 kg	 pcs
10/06.142	1.000	28	6.000

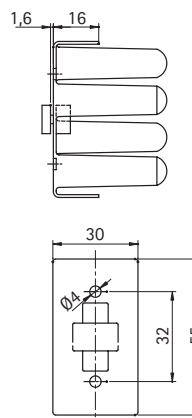


Per zoccoli in nobilitato  
For chipboard plinths




Code	 pcs	 kg	 pcs
10/06.145	2.000	48	6.000

Tubi utilizzati  
Tubes to be used

serie 01 pag.16    serie 09 pag.21    serie 30 pag.33  
serie 02 pag.17    serie S3 pag.22    serie 31 pag.32  
serie 03 pag.19    serie 04 pag.23    serie T0 pag.44

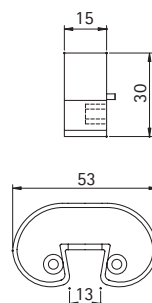


Per zoccoli in nobilitato  
For chipboard plinths




Code	 pcs	 kg	 pcs
10/06.159	500	15	5.000

Tubi utilizzati  
Tubes to be used

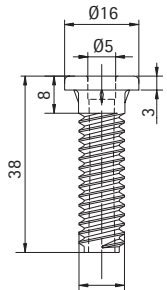
serie 01 pag.16    serie 09 pag.21    serie 30 pag.33  
serie 02 pag.17    serie S3 pag.22    serie 31 pag.32  
serie 03 pag.19    serie 04 pag.23    serie T0 pag.44



Gancio a molla  
Spring clip

Code	 pcs	 kg	 pcs
10/06.200	2.500	18	20.000




## Serie 07 > Viteria Screws



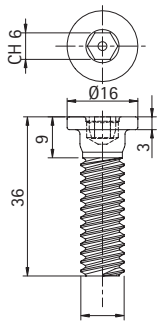
D10 Speed system



Doppio principio  
Speed system

Code	 pcs	 kg	 pcs
10/07.131	1.000	12	3.000




Vite forata  
Drilled screw



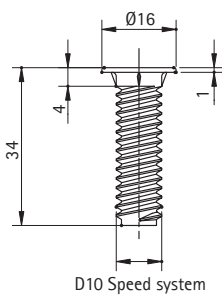
D10 Speed system



Doppio principio  
Speed system

Code	 pcs	 kg	 pcs
10/07.135	1.000	20	3.000




Vite testa piana esagono incassato  
Flat head screw hexagon socket



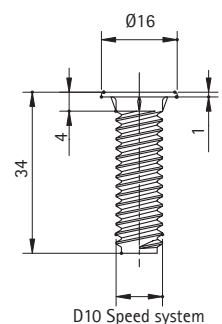
D10 Speed system



Doppio principio  
Speed system

Code	 pcs	 kg	 pcs
10/07.137	1.000	19	3.000




Vite testa piana brunita  
Screw flat head burnished



D10 Speed system

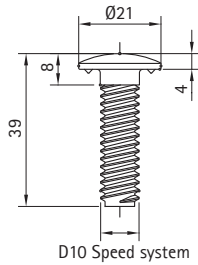


Doppio principio  
Speed system

Code	 pcs	 kg	 pcs
10/07.138	1.000	19	3.000

Vite testa piana zincata  
Flat head screw galvanized




## Serie 07 > Viteria Screws



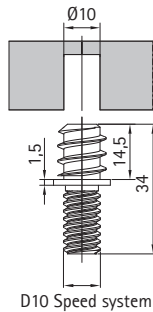
D10 Speed system



Doppio principio  
Speed system

Code	 pcs	 kg	 pcs
10/07.139	1.000	24	3.000




Vite testa cappello  
Screw head hat



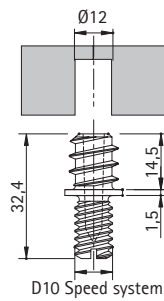
D10 Speed system



Doppio principio  
Speed system

Code	 pcs	 kg	 pcs
10/07.211	1.000	12	3.000




Perno autofilettante D.10 zincato  
D.10 pin tapping galvanized



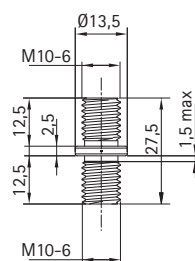
D10 Speed system



Doppio principio  
Speed system




Code	 pcs	 kg	 pcs
10/07.212	1.000	14	3.000

Perno autofilettante D.12  
Pin tapping D.12



M10-6



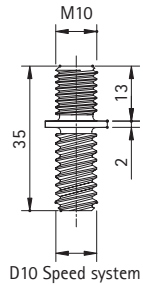
Code	 pcs	 kg	 pcs
10/07.010	1.000	20	3.000

Perno filettato M10  
Threaded pin M10



## Serie 07 >




### Viteria Screws



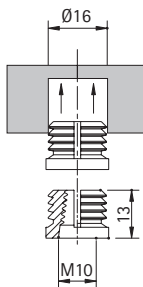
D10 Speed system






Doppio principio  
Speed system

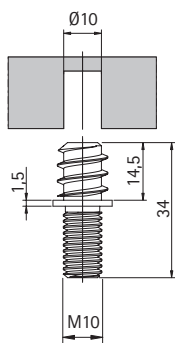
Code	 pcs	 kg	 pcs
10/07.222	1.000	12	3.000




Perno filettato M10  
Threaded pin M10



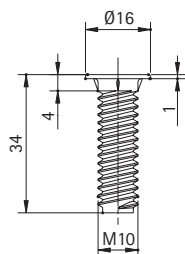
Code	 pcs	 kg	 pcs
10/07.016	5.000	2	5.000




Bussola espansione filettata M10  
Bush expansion threaded M10



Code	 pcs	 kg	 pcs
10/07.111	1.000	12	3.000

Perno filettato autobloccante zincato  
Threaded pin locking galvanized

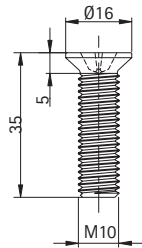


Code	 pcs	 kg	 pcs
10/07.121	1.000	18	3.000

Vite forata  
drilled screw

## Serie 07 >

### Viteria Screws



Code



pcs



kg



pcs

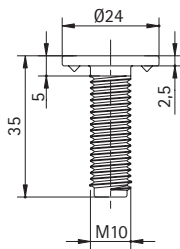
10/07.122

1.000

18

3.000

Vite testa piana svasata a croce  
Countersunk flat head screw Phillips



Code



pcs



kg



pcs

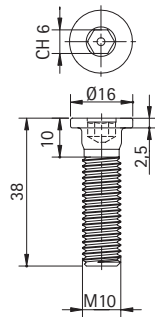
10/07.124

1.000

24

3.000

Vite testa piana larga  
Large flat head screw



Code



pcs



kg



pcs

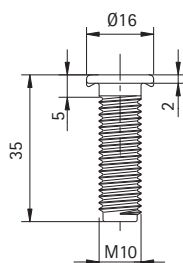
10/07.125

1.000

20

3.000

Vite testa piana sede esagonale  
Flat head screw hexagonal seat



Code



pcs



kg



pcs

10/07.128.Z

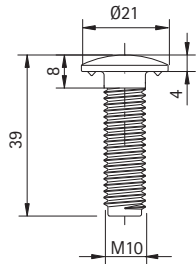
1.000




19

3.000

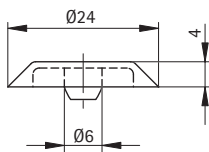
Vite testa piana zincata  
Flat head screw galvanized

## Serie 07 > Viteria Screws



Code	 pcs	 kg	 pcs
10/07.129	1.000	24	3.000




Vite testa a cappello  
Screw head cap



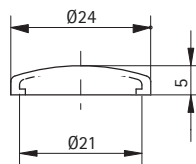
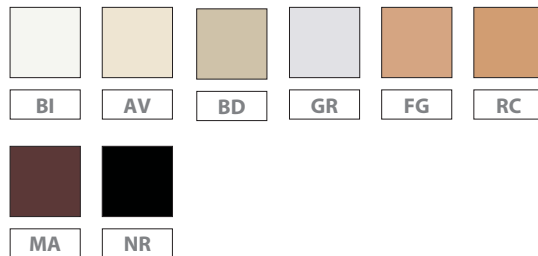
Tappo coprivite  
Screw cap

Screws to be used

10/07.131 – pag.39  
10/07.135 – pag.39  
10/07.121 – pag.41  
10/07.125 – pag.42

Code	 pcs	 kg	 pcs
10/07.C232	10.000	12	10.000




Colori disponibili  
Available colours



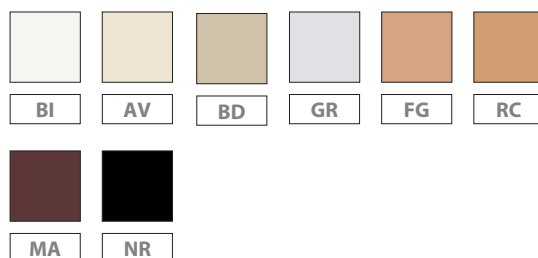
Tappo coprivite  
Screw cap

Screws to be used

10/07.139 – pag.40  
10/07.124 – pag.42  
10/07.129 – pag.43

Code	 pcs	 kg	 pcs
10/07.C233	10.000	12	10.000

Colori disponibili  
Available colours



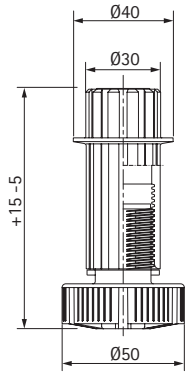
**Serie speciali**>  
Special series





Tubi e basette Serie T0-21-23-25  
Tubes and bases

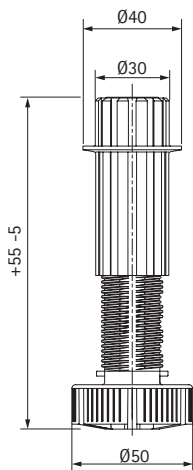






## Serie TO >

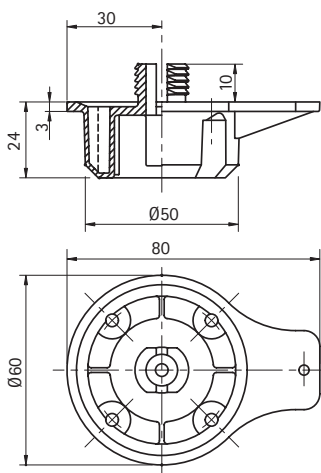
### Serie speciali Special series







Code	 mm	 pcs	 kg	 pcs
10/TO.A100	100	400	16	4.000
10/TO.A120	120	400	18	4.000
10/TO.A140	140	200	11	4.000
10/TO.A150	150	200	12	4.000

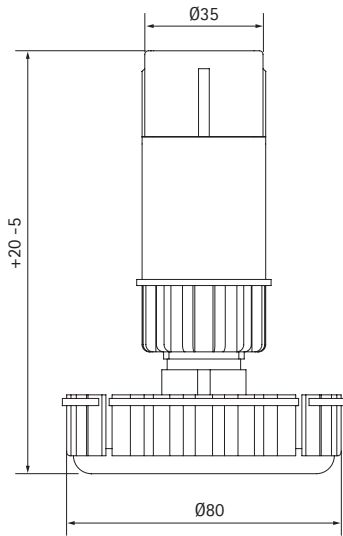






Code	 mm	 pcs	 kg	 pcs
10/TO.R100	100-150	400	18	4.000
10/TO.R120	120-170	400	21	4.000
10/TO.R140	140-190	200	12	4.000
10/TO.R150	150-200	200	13	4.000

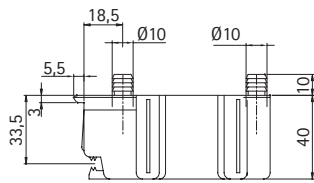






Code	 mm	 pcs	 kg	 pcs
10/05.0270	16	400	10	4.000

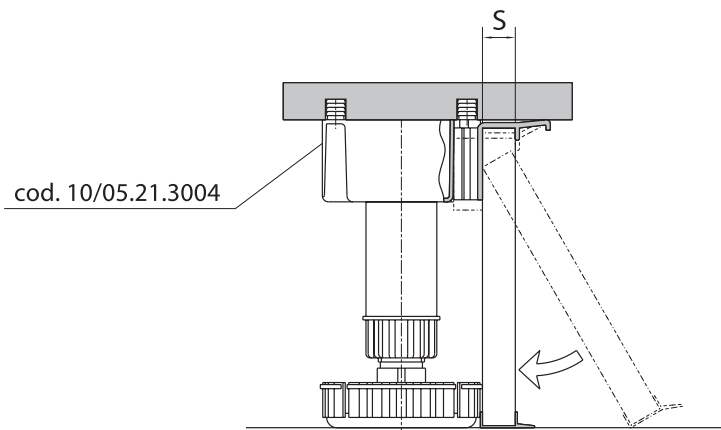
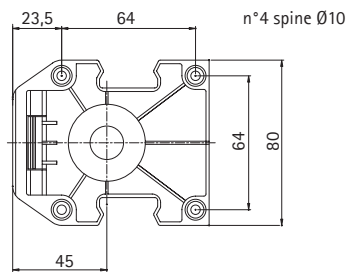
Serie 21 > Serie speciali Special series



Code				
	mm	pcs	kg	pcs
10/21.0080	80	300	17	6.000
10/21.0100	100	250	16	6.000
10/21.0121	121	200	14	6.000
10/21.0137	137	200	15	6.000
10/21.0150	150	150	13	6.000
10/21.0171	171	150	13	6.000
10/21.0180	180	150	14	6.000
10/21.0187	187	150	14	6.000
10/21.0200	200	120	10	6.000

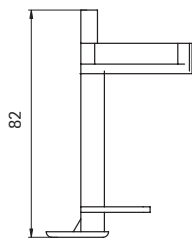
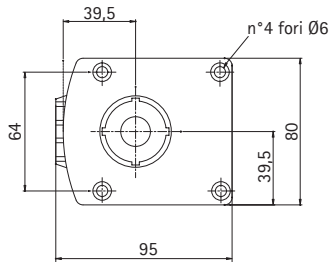
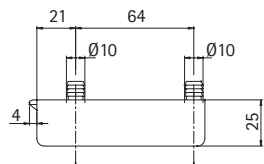
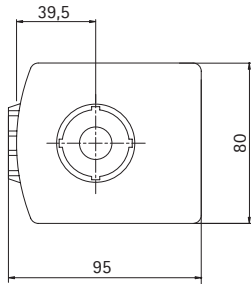
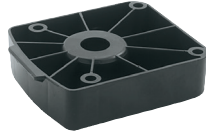
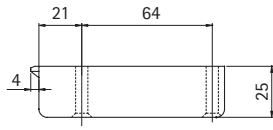


Code				
	mm	pcs	kg	pcs
10/05.21.3004	10	200	11	6.000



## Serie 21 >

### Serie speciali Special series



Per zoccoli in nobilitato  
For chipboard plinths



Code

pcs

kg

pcs

10/05.21.2000

300

15

6.000



Code

mm

pcs

kg

pcs

10/05.21.2500

10

250

14

6.000



Code

pcs

kg

pcs

10/06.21.3300

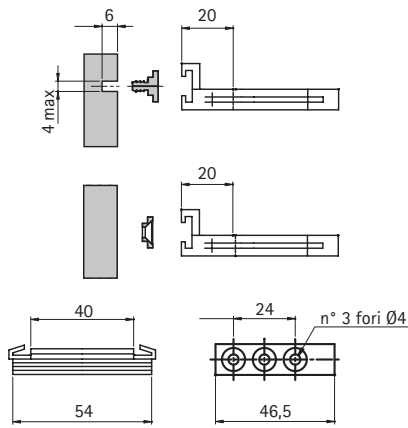
900

13




2.700

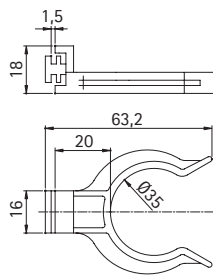
**Serie 21 >**

Serie speciali Special series






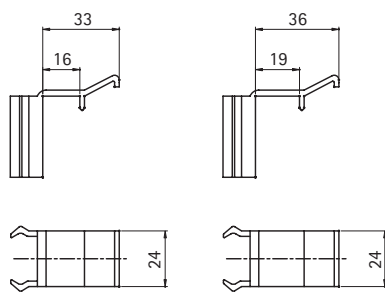
Per zoccoli in nobilitato  
For chipboard plinths

Code	 pcs	 kg	 pcs
10/06.21.3110	800	10	8.000






Per zoccoli in plastica e alluminio  
For plastic and aluminium plinths

Code	 pcs	 kg	 pcs
10/06.21.3115	2.000	20	8.000



3116

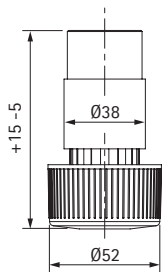
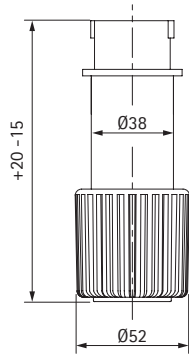
3119

Code	 pcs	 kg	 pcs
10/06.21.3116	2.500	15	10.000
10/06.21.3119	2.500	16	10.000



## Serie 23 >

### Serie speciali Special series



Code

mm

pcs

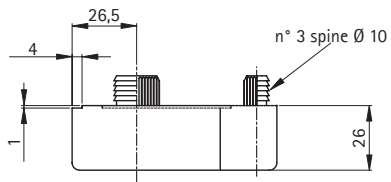
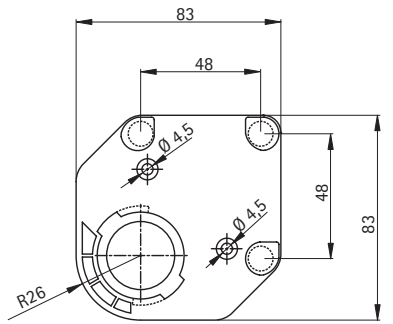
kg

pcs

10/23.0110	110	280	16	10.000
10/23.0130	130	250	16	10.000
10/23.0150	150	200	14	10.000
10/23.0170	170	190	14	10.000
10/23.0190	190	170	14	10.000
10/23.0210	210	150	13	10.000
10/23.0230	230	140	13	10.000
10/23.0250	250	130	16	10.000

10/23.0060	60	280	9	560
10/23.0070	70	280	11	560
10/23.0095	95	280	13,8	560

## Serie 23 > Serie speciali Special series



Code

pcs

kg

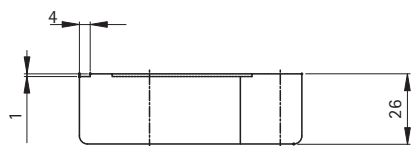
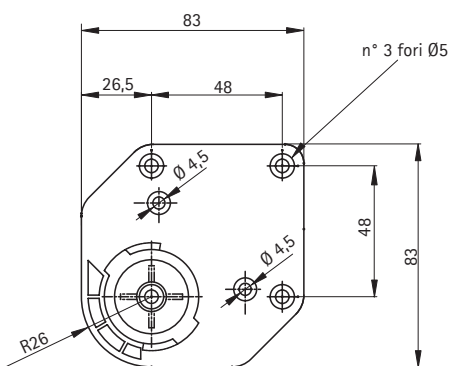
pcs

10/05.23. 4050

300

14

12.000



Code

pcs

kg

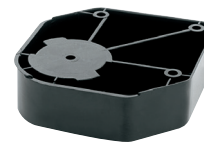
pcs

10/05.23. 4051

400

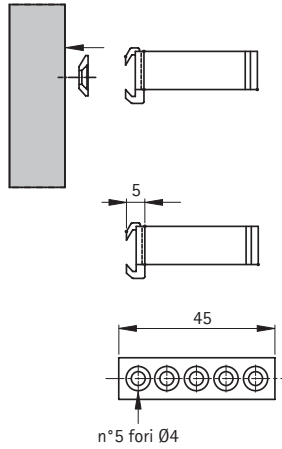
16




12.000

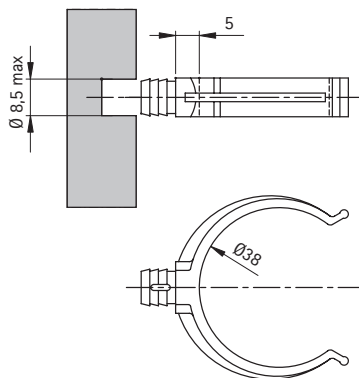





## Serie 23 >

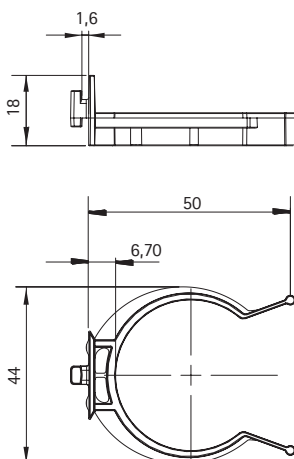
Serie speciali Special series






Code	 pcs	 kg	 pcs
10/06.1500	2.000	11	8.000



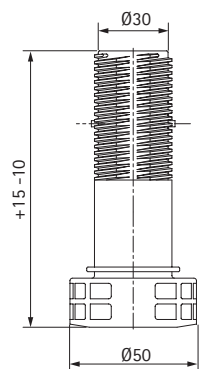
Code	 pcs	 kg	 pcs
10/06.1501	4.000	17	8.000



Code	 pcs	 kg	 pcs
10/06.1502	2.500	11	7.500

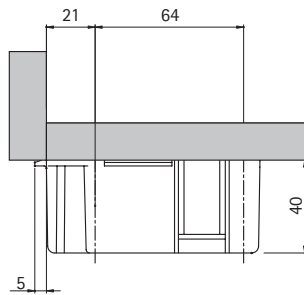
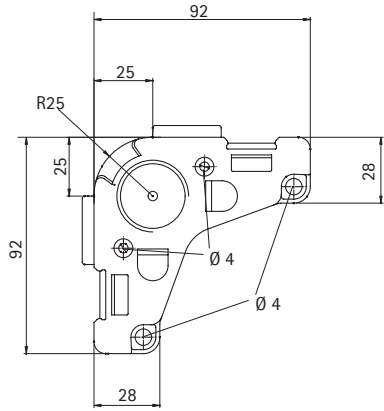
## Serie 25 >




Serie speciali Special series

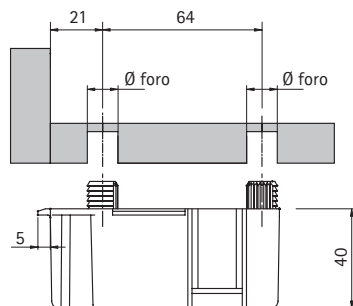
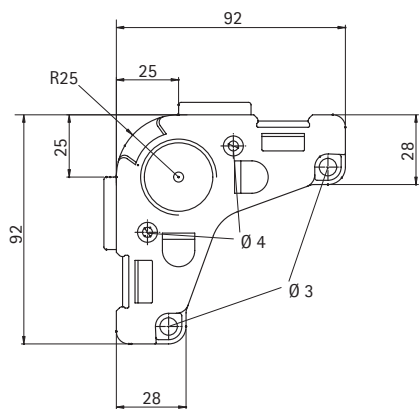






Code	mm	pcs	kg	pcs
10/25.0080	80	600	17	6.000
10/25.0090	90	600	18	6.000
10/25.0100	100	600	20	6.000
10/25.0110	110	600	21	6.000
10/25.0120	120	500	19	6.000
10/25.0130	130	500	20	6.000
10/25.0140	140	400	17	6.000
10/25.0150	150	400	18	6.000
10/25.0160	160	400	18	6.000
10/25.0170	170	300	14	6.000
10/25.0180	180	300	15	6.000
10/25.0190	190	300	16	6.000
10/25.0200	200	250	14	6.000
10/25.0210	210	200	12	6.000
10/25.0220	220	200	12	6.000

**Serie 25 >** Serie speciali Special series



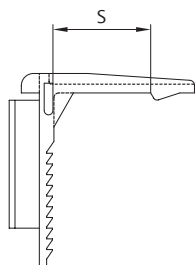
Code	 pcs	 kg	 pcs
10/05.25.1000	250	14	6.000







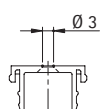
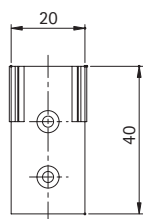
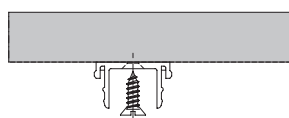
Code	 mm	 pcs	 kg	 pcs
10/05.25.1010	10	200	12	6.000
10/05.25.1012	12	200	12	6.000




## Serie 25 >

Serie speciali Special series



Code	 mm	 pcs	 kg	 pcs
10/06.2513	13	4.000	17	8.000
10/06.2516	16	4.000	17	8.000
10/06.2519	19	4.000	17	8.000



Code	 pcs	 kg	 pcs
10/06.2500	6.000	13	6.000



## Piedi in alluminio

### Aluminium legs

#### Profili estrusi

- Alluminio lega EN - AW 6060 - T5 UNI EN 755-2
- Finitura superficiale: anodizzazione (rivestimento per ossidazione anodica secondo UNI EN 12373-1) a scopo protettivo e decorativo

#### Accessori

- Tappi e regolazioni: ABS antiurto colorato
- Viti: acciaio temperato
- Minuteria metallica: acciaio zincato

#### Extruded profiles

- Aluminium alloy EN - AW 6060 - T5 UNI EN 755-2
- Surface finish: anodisation for protection and decorative purpose (coating specification for anodic oxidation according to UNI EN 12373-1)

#### Accessories

- Caps and regulations: ABS shock resistant
- Screws: hardened steel
- Small metallic parts: galvanized steel

## Finiture alluminio

### Finishes

Per una reale valutazione, contattare il nostro ufficio tecnico-commerciale.  
For a more precise colour evaluation, please contact our technical-commercial office.



- 01 anodizzato lucido
- 01 glossy anodised



- 04 anodizzato acciaio
- 04 steel anodised

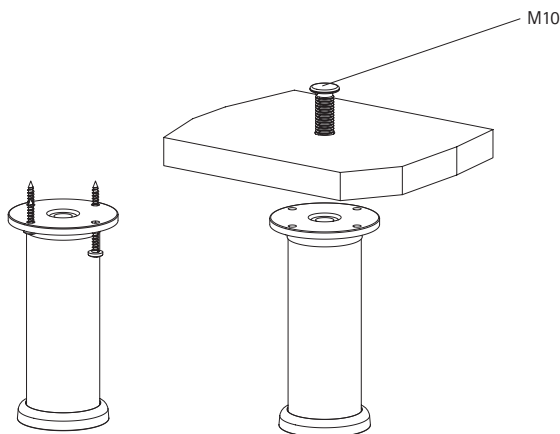
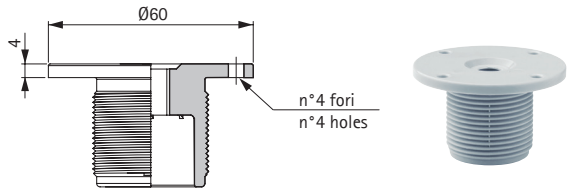


- 07 anodizzato naturale spazzolato
- 07 natural anodised brushed





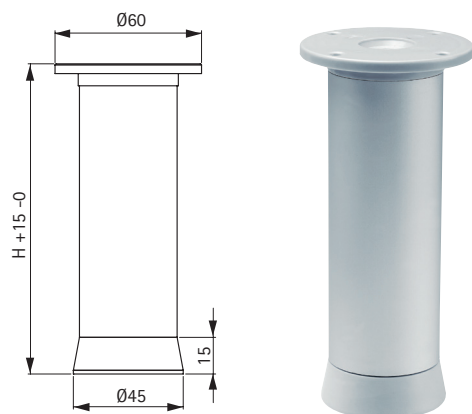
## Serie 83 > Piedi in alluminio Aluminium legs



Code	mm	pcs	kg	pcs
85/5521	-	-	-	-

La confezione comprende:  
N°4 piedi  
N°4 regolazioni Ø60 (85/5521)

The set consists of:  
N°4 legs  
N°4 regulations Ø60 (85/5521)

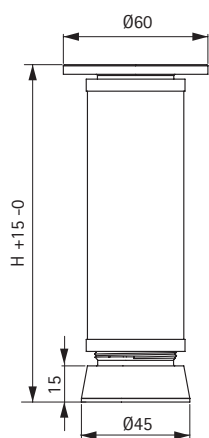


Code	mm	pcs	kg	pcs
81/83CG100F	100	25	8	50
81/83CG120F	120	25	8,5	50
81/83CG150F	150	25	9	50
81/83CG160F	160	25	10	50
81/83CG180F	180	25	10,5	50
81/83CG200F	200	25	11,5	50
81/83CG230F	230	25	12,5	50

Piedi cilindrici con tappo G  
Cylindrical legs with G cap

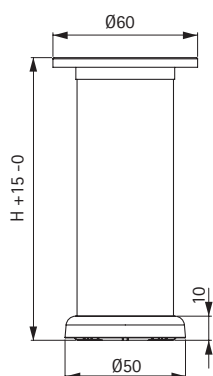
## Serie 83 >

### Piedi in alluminio Aluminium legs



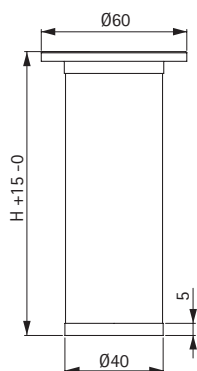
Code	mm	pcs	kg	pcs
81/83CB.100F	100	25	8	50
81/83CB.120F	120	25	8,5	50
81/83CB.150F	150	25	9	50
81/83CB.160F	160	25	9,5	50
81/83CB.180F	180	25	10	50
81/83CB.200F	200	25	10,5	50
81/83CB.230F	230	25	11,5	50

Piedi cilindrici con tappo B  
Cylindrical legs with B cap



Code	mm	pcs	kg	pcs
81/83CD.100F	100	25	8	50
81/83CD.120F	120	25	9	50
81/83CD.150F	150	25	9,5	50
81/83CD.160F	160	25	10	50
81/83CD.180F	180	25	11	50
81/83CD.200F	200	25	11,5	50
81/83CD.230F	230	25	12,5	50

Piedi cilindrici con tappo D  
Cylindrical legs with D cap



Code	mm	pcs	kg	pcs
81/83CE.100F	100	25	8	50
81/83CE.120F	120	25	9	50
81/83CE.150F	150	25	9,5	50
81/83CE.160F	160	25	10	50
81/83CE.180F	180	25	11	50
81/83CE.200F	200	25	11,5	50
81/83CE.230F	230	25	12,5	50

Piedi cilindrici con tappo E  
Cylindrical legs with E cap